



॥ विश्वात्मिभुवं धृया ॥  
SINCE 1985  
MIT Pune Initiative

40 Years of Educational Excellence



## VISHWASHANTI GURUKUL

॥ विद्या सर्वस्य भूषणम् ॥

“ NOT JUST **EDUCATION**  
IT'S VALUE BASED **EDUCATION** ”



**ADMISSIONS OPEN**

Call : 020 48 555 444

MIT PUNE INITIATIVE



### Prof. Dr. Vishwanath D. Karad

Founder, Executive President and Managing Trustee, MAEER, Pune | India UNESCO Chair Holder



### Rahul V. Karad

Executive President, MIT World Peace University  
Vice President MAEER, Founder, MITSOG, BCS, NTC, NWP



### Dr. Aditi Karad

Executive Director - Dr. Vishwanath Karad World Peace School  
Member Trustee & Joint Secretary General,  
MAEER's MIT, Pune



## VISHWASHANTI GURUKUL

॥ विद्या सर्वस्य भूषणम् ॥



4 Universities



80,000+ Present Students



20+ Campuses



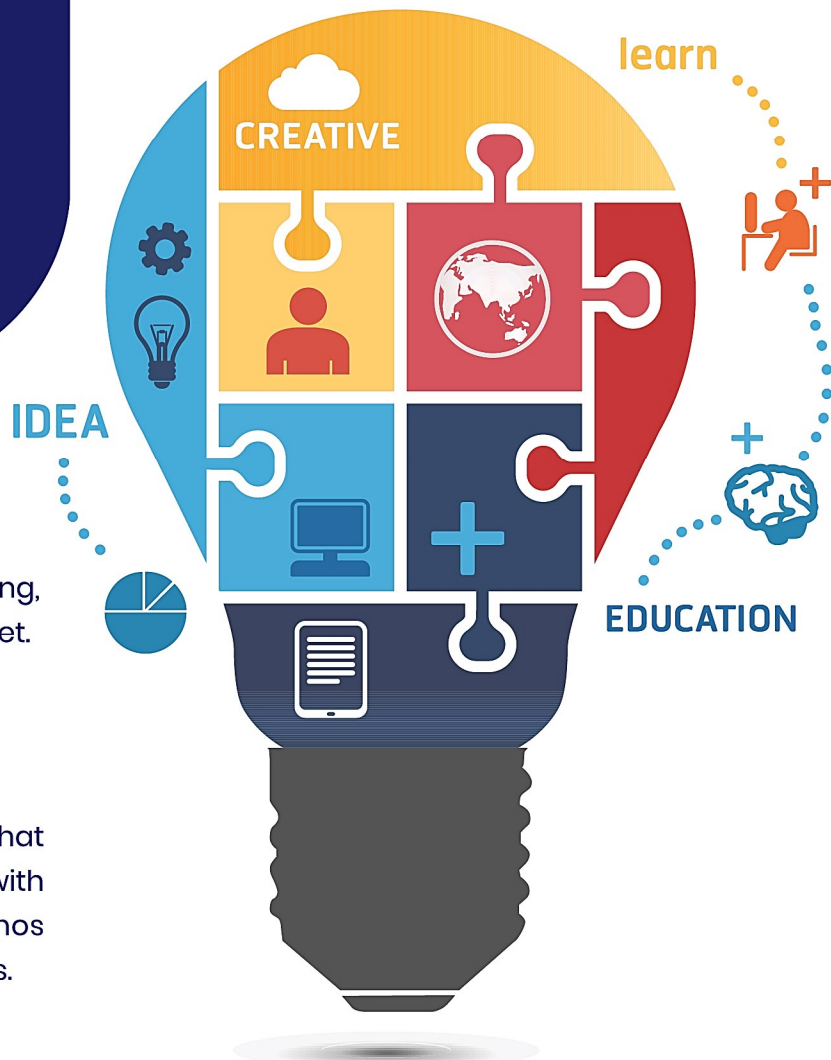
70+ Educational Institutes



7,000+ Staff Members



KG to Ph.D. Education



### VISION:

To strive for excellence by cultivating, human values and a global mindset.



### MISSION:

To create a centre for excellence that promotes holistic development with child-centric joyful learning, ethos and diverse educational programs.

# HOLISTIC DEVELOPMENT OF THE CHILD



PHYSICAL DEVELOPMENT



INTELLECTUAL DEVELOPMENT



SPIRITUAL DEVELOPMENT



PSYCHOLOGICAL DEVELOPMENT



## SPORTS CULTURE

Athletics Track    Cricket Field    Archery\*

Tennis Court    Football Field    Chess

Basketball Court    Skating    Badminton Court

Horse Riding\*    Table Tennis

Dance    Music    Arts



## SPORTS & CULTURAL ACADEMY (PSA)



Dance



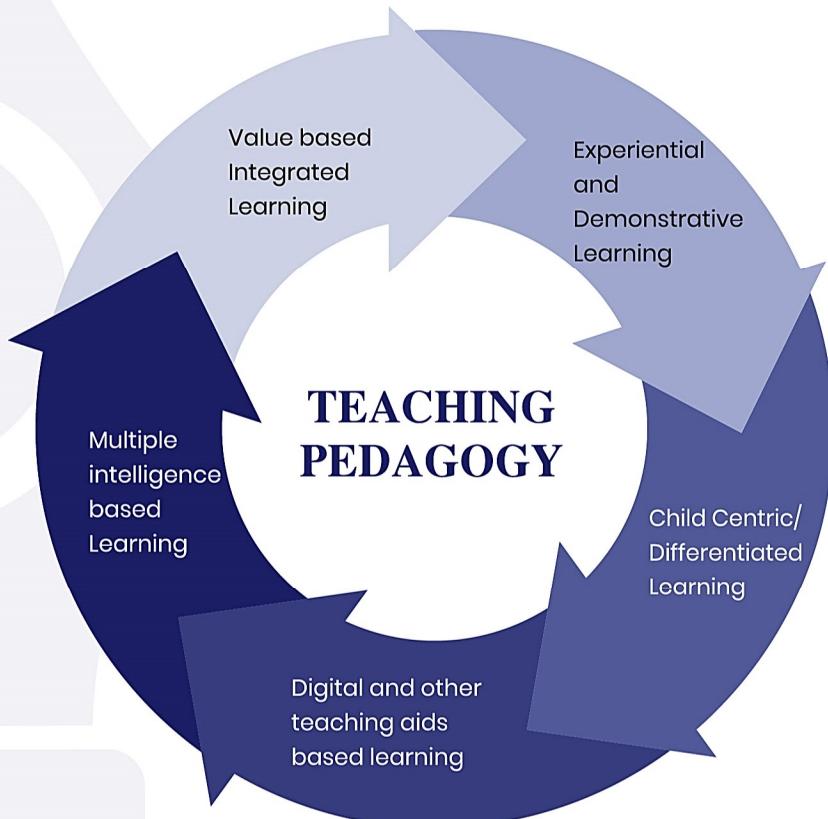
Music



Arts



Sports



# Infrastructure And Facilities

## Salient Features of School



20 Acres of Lush Green Campus



Spacious Digital Classrooms



Science Lab, ICT Lab, Visual & Performing Arts



Story Based Language Lab, Math Lab



Unique Teaching – Learning Pedagogy



Horticulture Lab



Indoor & Outdoor Sports Arena



English Communication Programme



Yoga & Meditation



No Tuition Policy



Online Parent Interaction System



Transport Facility



For Admission Contact Us

 020 48 555 444



Gat No. 296/297, Gandhi Nagar,  
Opp to HP Petrol Pump, Indore

For  
More  
Details

779 669 9715  
779 669 9717

[www.vishwashantigurukulindore.com](http://www.vishwashantigurukulindore.com)